



YLI ELECTRONIC

European Type Electromechanical Lock with Cylinder

Model:YML-650B



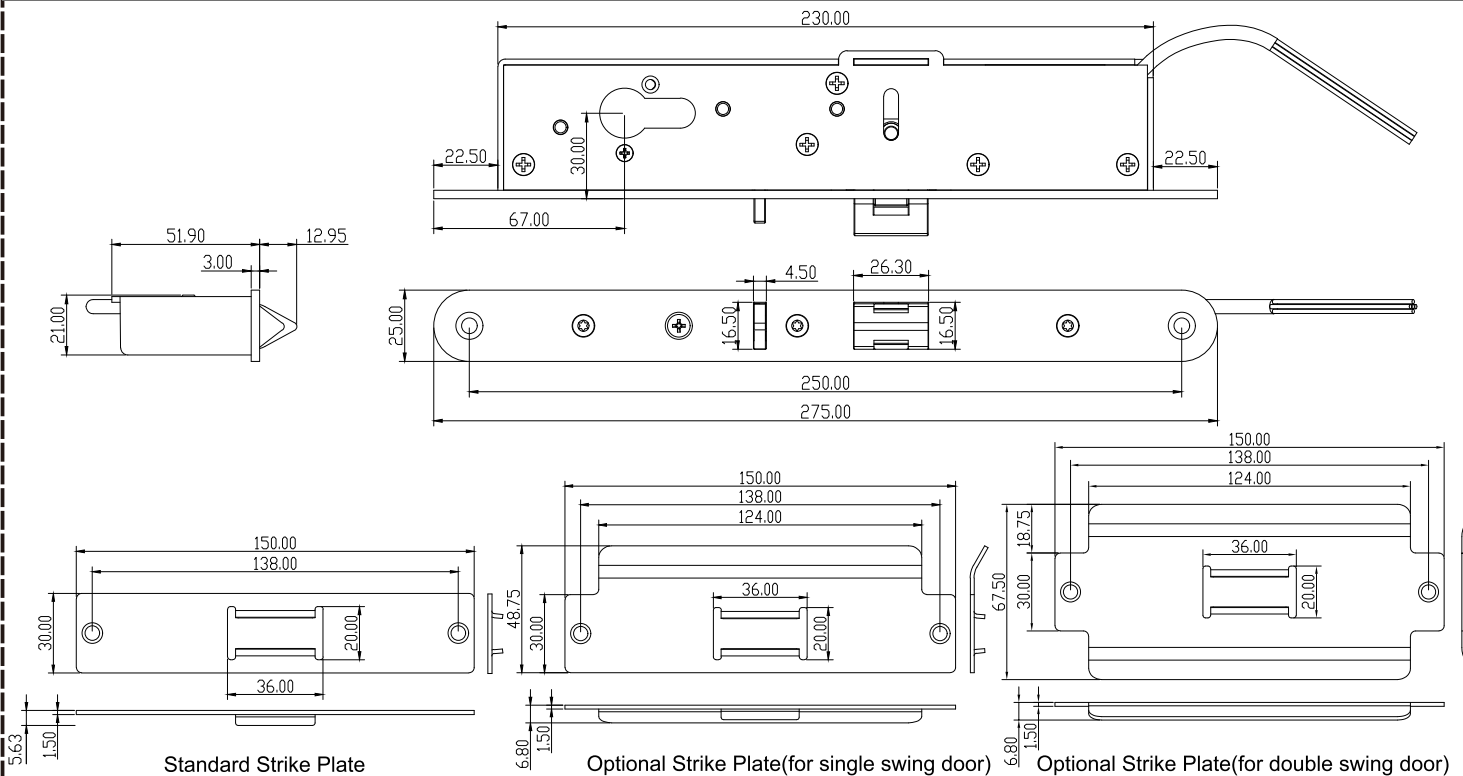
Parameters

Factory default	NO ; NC(Adjustable)
NO ;NC	NC: when door is closed, power on to lock, power off to unlock,cylinder is invalid to unlock in this status NO: power off to lock, power on to unlock or unlock by cylinder
Face Plate	275Lx25Wx51.9H(mm)
Strike	Standard Strike Plate: 150Lx30Wx1.5H(mm); Optional Strike Plate(for single swing door):150Lx48.7Wx1.5H(mm); Optional Strike Plate(for double swing door):150Lx67.5Wx1.5H(mm)
Magnetic Valve	500000 times
Voltage	12~24VDC/AC
Current	≤300mA
Signal Output	Lock signal NC/COM/NO contact, the signal will take effect only when both conditions of closing and locking are met
Operating temp	(-20℃~+50℃)
Weight	1.4kg

Standard Features

- 1** Suitable for single or double swing doors
- 2** Suitable for narrow-frame wooden doors and metal doors
- 3** Fail safe and fail secure mode adjustable
- 4** 304 stainless steel panel, stainless steel bolt withstands 1000lbs holding force
- 5** Vertical or horizontal installation
- 6** 304 stainless steel strike plate optional for single or double swing doors
- 7** With lock signal output
- 8** Electric/Automatical; Locking mode selectable

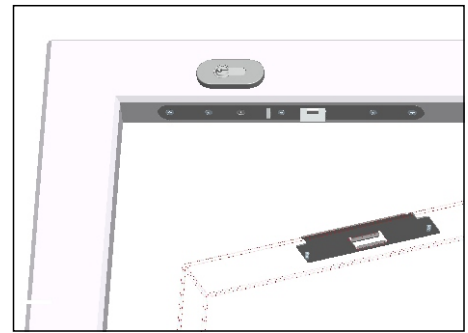
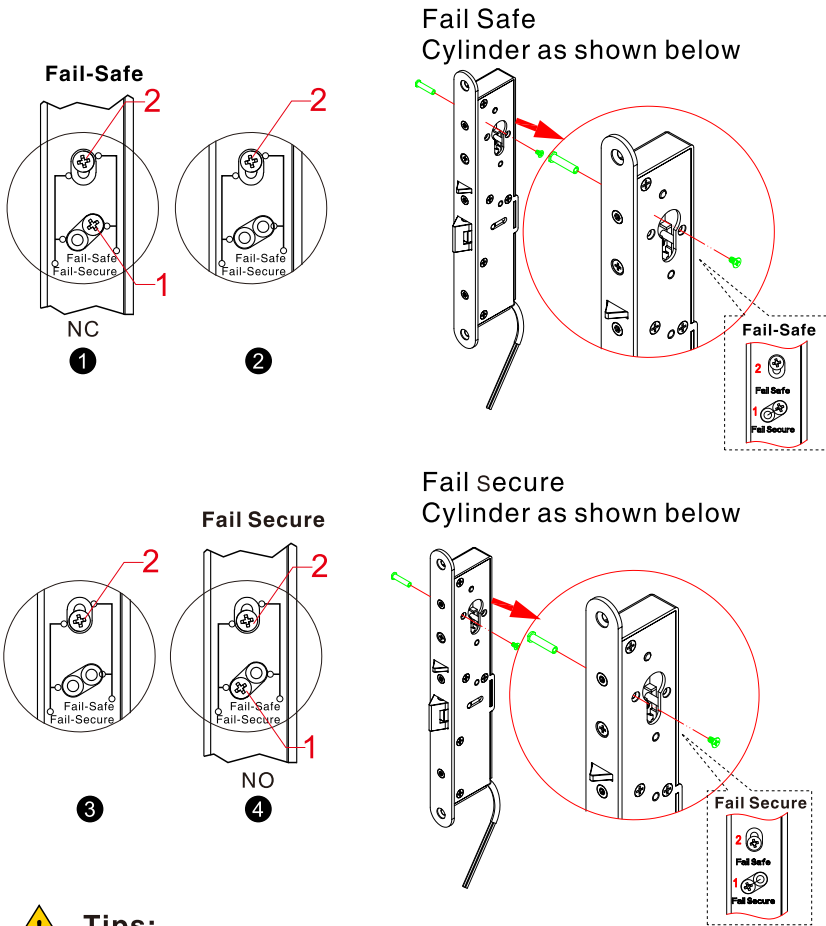
Dimensions (Unit:mm)



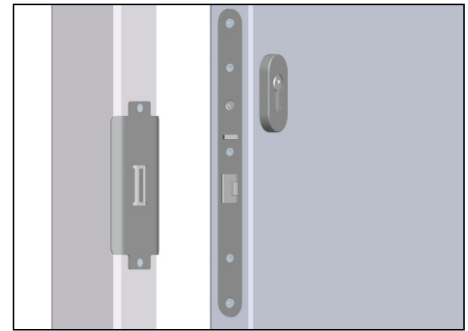
Installation

Mode Switching

Pic 1: Unscrew screw 1 while loosen screw 2; Pic 2: sliding move screw 2
 Pic 3: Tighten screw 1, 2; Pic 4: process finished



Installation on top



Side installation

Wiring

	Red		+	
	Black		-	
	Yellow		NC	} Lock Signal Output
	White		COM	
	Green		NO	

! Tips:

Please loosen Screw 2 and move it slightly, do not take it out, or else it will make magnetic valve drop out of lock body.

Please follow steps on sticker while installing.

Wiring Diagram

